

# Flat Bed CNC Lathe

Model: CK6140



**Supplier: Shanghai ANTS Machine Equipment Co.,Ltd**

## Contents

<b>Item</b>	<b>Contents Description</b>
1	Technical Parameter
2	Product Reference Picture
3	Equipment Introductions
4	Standard Equipment&Optional Equipment
5	Manufacturing Time
6	Acceptance Test & Accuracy standard
7	Quality Assurance & After-sales Service
8	Packing & Shipping Terms
9	Company Introduction
10	Quotation & Transaction Terms.

## Technical proposal

### Part 1: Technical parameter

Name		Unit	Specifications		
			CK6140/550	CK6140/750	CK6140/1000
Max. Swing over Bed		mm	Φ400		
X-direction rail span		mm	180		
Z-direction rail span		mm	330	400	
Max. Swing over slide		mm	Φ240		Φ180
Top distance		mm	550	750	1000
Max. disc machining diameter			400		
Max. turning length		mm	420/300 (6/8 Position)	620/500 (6/8 Position)	830/700 (6/8 Position)
Center High	From the bed	mm	230		210
	From the ground	mm	1020		
Spindle through hole diameter		mm	Φ48/Φ82		
Bar diameter		mm	Φ40/Φ65		
Optional hollow chuck tie rod through hole		mm	Φ40/ Φ65		
Spindle end type			A2-6/A2-8		
chuck		mm	Ordinary Φ200 (48 holes)/Φ250 (82 holes)		
Spindle taper taper		No	40° non-standard/metric 90, 1:20 (82 holes)		
Optional 8-inch hollow chuck draw tube inner diameter		mm	Φ40		
Spindle limit speed		rpm	2000(48hole)/1600(82Hole)		
Tail stock sleeve diameter		mm	Φ60		
Tail stock sleeve inner hole taper		No	MT5#		
Tail stock sleeve stroke		mm	120		
Tail stock form			Ordinary hand crank (optional hydraulic tailstock)		
Number of electric tool holders		Pcs	4 (optional 6/8 station electric)		
Knife square size		mm	25×25 (four stations)		
Screw model	X Axis	mm	FDC2506-P3	FDC2506-P3	FDC2506-P3
	Z Axis	mm	FDC3210-P3	FDC3210-P3	FDC4008-P3
X/Z rapid traverse speed		m/min	6/8	6/8	6/8


X travel	mm	220	220	220
Z travel	mm	550	750	1000
Minimum setting unit	mm	0.001	0.001	0.001
main motor power	KW	5.5 (Optional 7.5kw)	5.5 (Optional 7.5kw)	5.5 (Optional 7.5kw)
total power	KW	11 (13)	11 (13)	11 (13)
Machine net weight	Kg	1900	2200	2300
Dimensions (L×W×H)	mm	2200×1500×1750	2200×1500×1750	2500×1600×1700

**Part 2 : Product reference picture****Part 3: Equipment Introductions****Product description**

CK6140 machine tools is a mature product has a compact structure, beautiful appearance, large spindle torque, high rigidity, stable and reliable performance, and excellent accuracy retention. This series machine can automatically process the inside and outside cylinder surface, cone surface, circular arc surface, end face, such as processing, and also can process the single and multiple threads in metric, inch and other standards.

## Features

	<p><b>Spindle</b> Adopt high-precision spindle bearing set and the spindle with precision assembly and dynamic balance test to ensure the spindle with high precision, low noise and strong rigidity.</p>
	<p><b>Tool holder</b> It adopts the working principle of worm gear transmission, meshing of upper and lower gear plates, and screw clamping. It has the advantages of fast indexing, high positioning accuracy and large tangential torque. The transmission and indexing of the letter adopts the Hall element, which has a long service life.</p>
	<p><b>Chuck</b> Large clamping force, long service life, strong design, hard jaws can be interchanged with soft jaws, and jaws are adjustable.</p>
	<p><b>Transmission</b> High efficiency, small temperature rise, high precision, high speed, high rigidity, reversibility, long life, low energy consumption, high synchronization, simple maintenance, strong operability for users</p>
	<p><b>Tail stock</b> The hydraulic tail stock is processed by manual (or hydraulic) adjustment, manual locking, and manual (or hydraulic) jacking of the work piece.</p>

	<p><b>Machine tool lubrication</b>          Each lubricating point adopts a forced automatic lubricating device for fixed-point quantitative lubrication of the lead screw and guide rail. When there is an abnormal state or the oil quantity is insufficient, a warning signal is automatically generated.</p>
---	--

**Note:**

1. When installing the chuck or fixture, please pay attention to the limit speed of the selected chuck or fixture.
2. The CNC machine tool has strict requirements on the power supply. If the fluctuation of the user's power grid exceeds  $\pm 10\%$ , a voltage stabilizer must be added, otherwise the CNC machine tool will not work normally, and even unpredictable results will occur.

**Part 4: Standard Equipment&Optional Equipment**

**Standard accessories:**

Name	Specifications	Quantity
Control System	GSK 980TC3	1 set
Spindle motor	7.5 KW	1 set
Spindle structure	Step-less	1 set
Spindle bearing	7024TBT/7022DB	1 set
Guide	high-frequency hardening	1 set
Ball screw	2506/3210 (0.55 meter)	1 set
	2506/3210 (0.75 meter)	1 set
	2506/4008 (1 meter)	1 set
Screw bearing	Special bearing for ball screw	1 set
Tool holder	4-position electric tool	1 set
Automatic lubricating device	RBCLB-2BZK	1 set
Three-jaw manual chuck	K11200	1 set
Cooling pump	90W	1 set

**Optional accessories**

Name	Specifications	Quantity
Hydraulic station (optional)	43L	1 set
Hydraulic chuck (optional)	8" inch	1 set

**Part 5 :Manufacturing Time**

Around 35-45 calender days, The machine will be ready for FAT(Factory Acceptance Test) after received deposit and after confirmed contract and technical proposal.

Remark: If the customer has special requirements for the delivery time, please confirm with Shanghai ANTSHI

**Part 6 : Acceptance Test&Accuracy standard**

The machine is accepted according to GB/T25659.1-2010 standard

Test items		Standard tolerance (mm)
Periodic axial play of the main shaft		0.005
Radial run-out of spindle chuck positioning cone		0.005
Position	Repeat positioning accuracy A	X: $\pm 0.005$ ; Z: $\pm 0.007$
Diameter uniformity		0.01/150
Flatness		0.025/ $\phi 300$
Thread pitch product error		0.025/50
Surface roughness		Ra1.6 $\mu$ m

**Part 7 : Quality Assurance & After-sales Service**

Shanghai ANTS Machine Equipment Co., Ltd. fully fulfills the terms of machine tool technical services promised to users.

1. Since the final acceptance of the machine tool, all failures caused by quality problems will be guaranteed for one year free of charge.
2. Since the final acceptance of the machine tool, the failure of other parts caused by quality problems will be guaranteed for one year free of charge.
3. Since the final acceptance of the machine tool, we also guarantee to actively cooperate with the user to repair the failure caused by the quality of the machine tool, and free labor costs within one year.
4. Lifetime guarantee to provide spare parts supply at preferential prices.

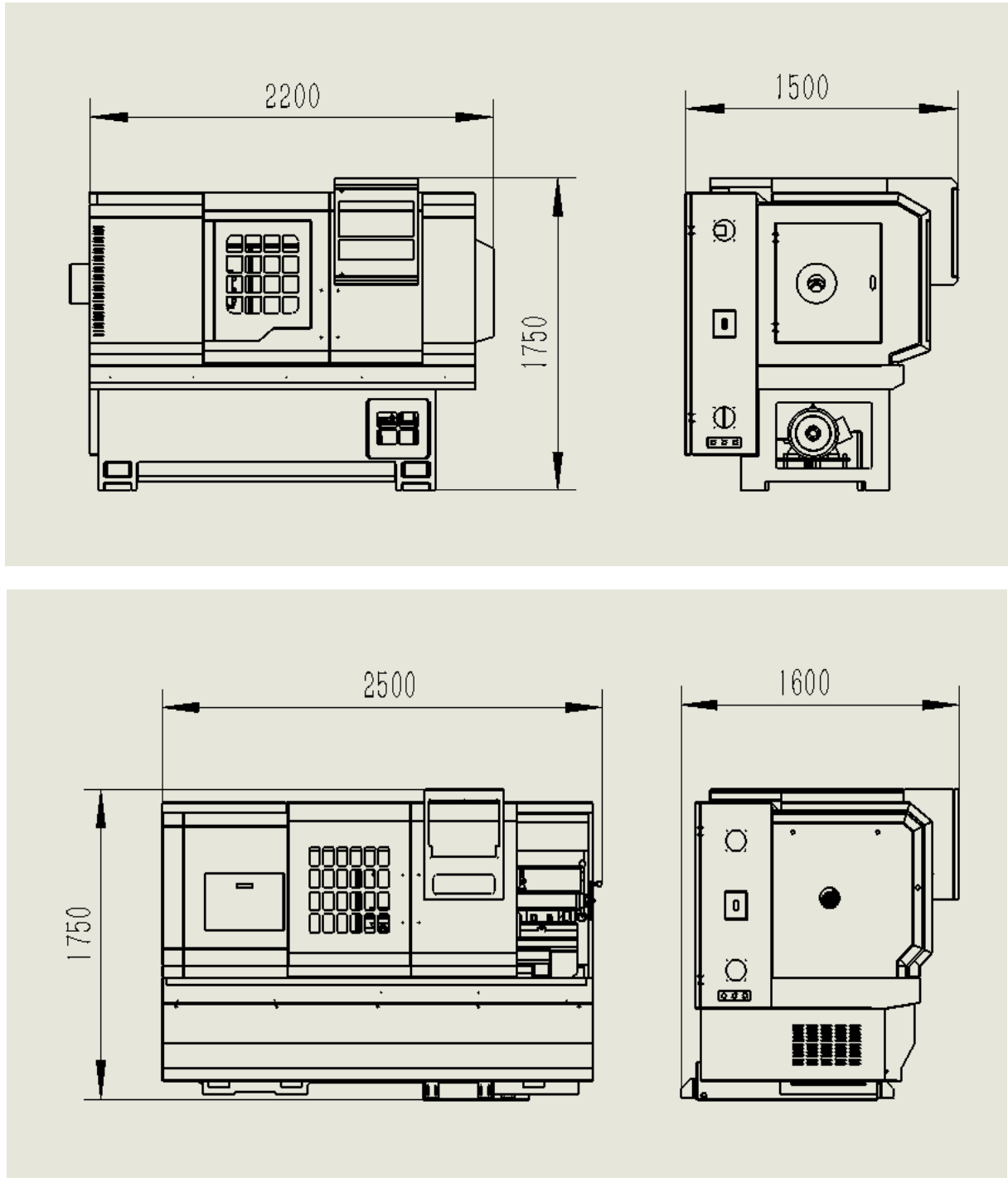
**Warranty service:**

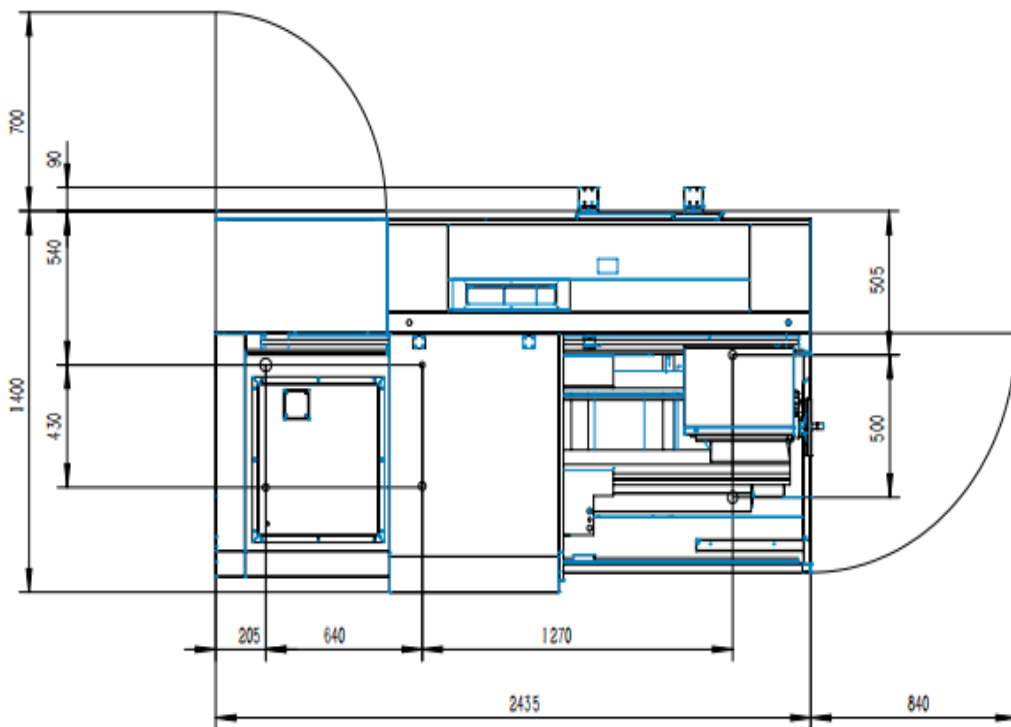
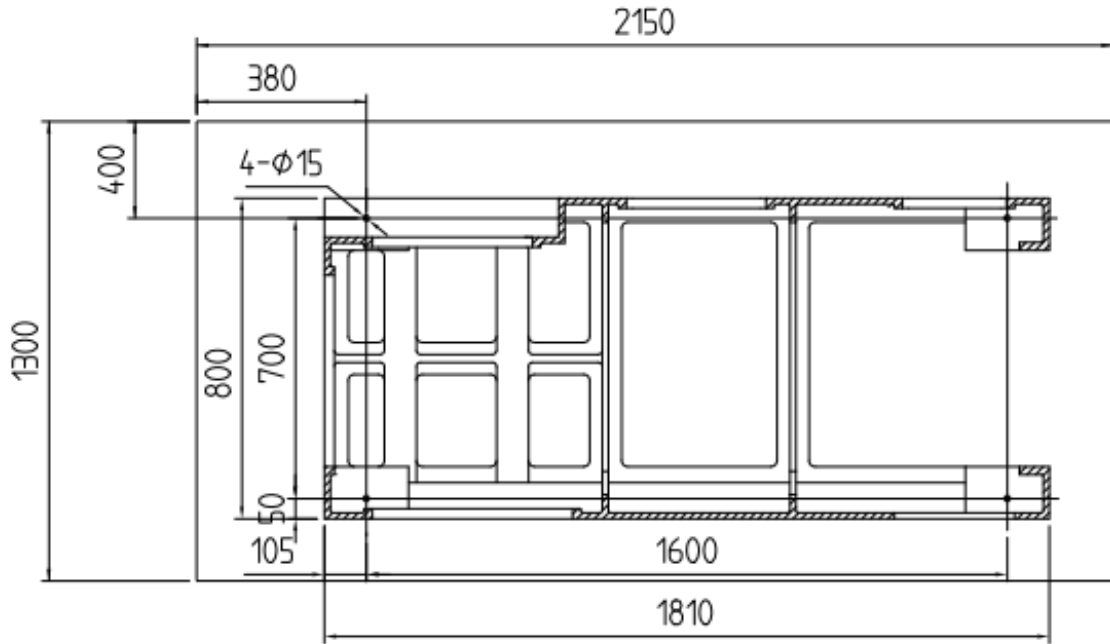
one year warranty( 12 months since customer receive & use the machine).

The manufacturer guarantees to provide life-long paid maintenance services for the product.

## Part 8: Packing & Shipping Terms

### 1. Machine Dimensions&Foundation Drawing





**2. Provide the following technical documents when the equipment is delivered**

Machine tool manual (including mechanical and electrical parts) 1 copy accuracy check sheet 1 copy

Tool holder manual 1 copy

System manual 1 copy

Packing list 1 copy

Factory qualified certificate 1 copy

**3. Packaging and transportation**

Exporting standard wood box packing

The transportation is carried out in accordance with the contract terms.

**Part 9: Company Introduction**

Shanghai ANTS Machine Company is mainly engaged in Universal lathe, CNC lathe, Heavy duty lathe, Special purpose lathe, Sawing machine, Drilling machine, Milling Machine, VMC (Vertical Machining Centre), HLC (Horizontal Machining Centre), Gantry Machining Centre and other equipment. The products are sold to Hebei, Shaanxi, Hunan, Henan, Jiangsu, Shandong, Guangdong, Shanghai and other places. More than 300 professional after-sales service personnel in 83 offices across the country provide customers with pre-sales and after-sales services at any time. The products are deeply trusted by customers and are exported to more than 20 countries and regions such as the United States, Germany, Italy, India, Thailand, and Russia. Especially in recent years, they have been widely used in major domestic well-known enterprises such as China National Heavy Duty Truck, Ministry of Aeronautics and Space, Zhongyuan Special Steel, Zhengmei Machinery, Shanghai Heavy Industry, Wuhan Iron and Steel, Anshan Iron and Steel and Sany Heavy Industry have the characteristics of rich experience, excellent.

## Factory Pictures



### ISO 14001 Environment Management System

### ISO 9001 Quality Management System

### European CE Certificate



**Part 10: Quotation & Transaction Terms.****QUOTATION SHEET**

CURRENCY UNIT : USD

Date: June 12 th, 2023

Machine Type	Equipment Model	Technical Parameter	PRICE in USD (EXW Factory)
CNC Lathe	CK6140x500	CNC System :	11750 USD/set

\* The sea freight cost fluctuate everyday due to the global shipping situation, The final confirmed price can be checked when the machine is about to ship.

**Remarks :**

1. **Origin:** The People's Republic of China
2. **Delivery Time:** 30-45 Days ready for the factory acceptance test.
3. **Payment terms:** 30% payment in advance for deposit, 70% balance after the pre-acceptance test before shipment
4. **Package:** Exporting standard Wooden Box Package
5. **Validity:** 30 Days.(The buyer has to re-check with seller if the quotation validity is expired)