

Machine Offer

**ANTISHICNE**

# [ CNC PANEL BENDER EDGE FOLDING MACHINE ]

Model: PBE-1400

Max. Bending Length: 1400mm

Sheet Feeding Type: C Arm



## PBE Series

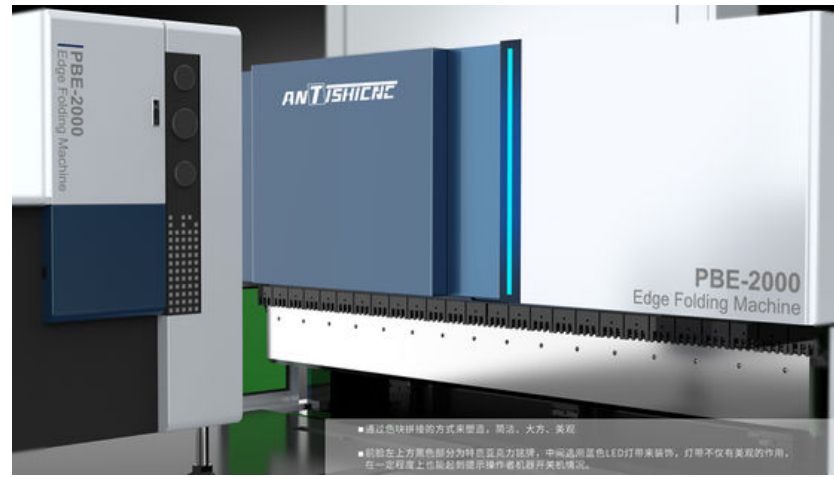
The multilateral bending center does not need to change the mold, the working stroke is short, and the feed is fast.

Comprehensive efficiency is 3 to 4 times that of manual bending machine.

According to the bending process, it can be automatically folded up and down, so as to realize the bending of arcs, dead edges, and various angles.

Highly intelligent operation control system, which can efficiently bend different workpieces.

Energy saving and consumption reduction, reducing labor and mold costs.



Inside

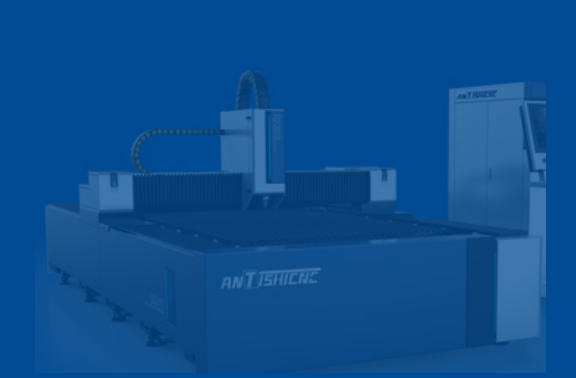


# CNC PANEL BENDER PBE-1400



1400mm bending width

| Model                            | Unit            | PBE-1400  |      |
|----------------------------------|-----------------|-----------|------|
| Nominal Force                    | KN              | 250       |      |
| Bending Size                     | mm              | 1400*1400 |      |
| Bending Height                   | mm              | 170       |      |
| Min. Forming Size of Four Side   | mm              | 200x110   |      |
| Min. Forming Size of Single Side | mm              | 110       |      |
| Min. Arc Radius                  | mm              | 2         |      |
| Bending Angle                    | KW              | 0-180     |      |
| Min .Sheet Thickness             | mm              | 0.35      |      |
| Bending Process                  | Stainless Steel | mm        | 1.0  |
|                                  | Steel           | mm        | 1.5  |
|                                  | Aluminum        | mm        | 1.6  |
| Rated Voltage                    | V               | 380±10%   |      |
| Dimension                        | Length          | mm        | 3000 |
|                                  | Width           | mm        | 2000 |
|                                  | Height          | mm        | 2600 |



# CNC PANEL BENDER PBE-1400



1400mm bending width

## Main Components Configuration

| No | Item                | Description          | Brand       |
|----|---------------------|----------------------|-------------|
| 1  | Controlling System  | HC15E-S Touch Screen | SYNTEC      |
| 2  | Servo Driver        | BUS Control          | SYNTEC      |
| 3  | Servo Motor         | H & F Series         | SYNTEC      |
| 4  | Motor Reducer       |                      | SIGRINER    |
| 5  | Ball Screw          | Heavy Load           | YIGONG      |
| 6  | Bearing             |                      | NACHI       |
| 7  | Linear Guide        |                      | HIWIN/PMI   |
| 8  | Coupling            |                      | MIKIPULLEY  |
| 9  | Lubrication System  |                      | BAOTN       |
| 10 | Electric Component  |                      | Schneider   |
| 11 | Pneumatic Component |                      | AirTac/JULY |

## Configuration

| Name             | Configuration        |
|------------------|----------------------|
| Feeding Type     | Arm Hold Dual Rotate |
| Table Type       | Brush                |
| CNC Axes         | 11                   |
| Speed Adjustment | Standard             |
| Senior Command   | Standard             |
| Arc Command      | Standard             |
| HEM Command      | Standard             |
| Robot Connection | Standard             |



# PBE-1400 CNC PANEL BENDER



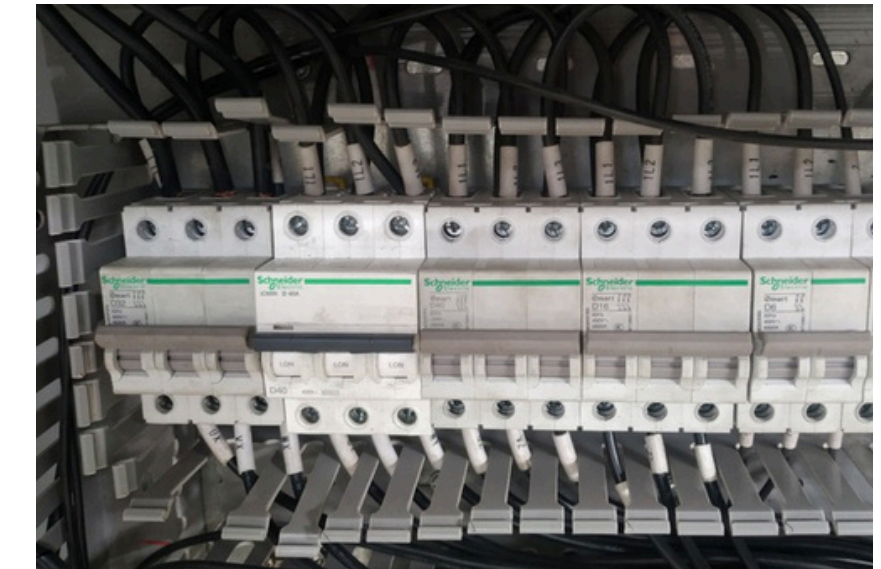
### FRAME

Because of the high-strength motion requirements of the bending center, the frame adopts an arch design, thickened, thickened and widened, the frame is tempered, heat-treated, annealed and tempered, and aged twice to ensure the long-term running accuracy, stability and high rigidity of the machine.



### CONTROLLER

Adopt all electric servo full-closed loop system, the system supports up to 16-axis simultaneous linkage, so that the bending action is smooth, the mechanical operation is highly coordinated, it can smoothly realize the combination of various complex actions, and with high working efficiency.



### ELECTRICAL

The main components of the electrical control system of the machine are adapted Schneider products from France, and the main seals of the hydraulic system are imported from Europe and the United States.

# PBE-1400 CNC PANEL BENDER

**ANTISHINE**

## SERVO SYSTEM

The pure electric servo fully closed-loop system is adopted, and the system supports up to 16 axes concurrent linkage, so that the bending action is smooth, the mechanical operation is highly coordinated, and the combination of various complex actions can be smoothly realized. The whole machine has high working efficiency and low daily maintenance workload. It has a self-lubricating system for the whole machine. When the oil amount is lower than the specified value, the system will automatically alarm. Just follow the program prompts to add lubricating grease.



**IO Config.**



**BENDING CONTROLLER**



**ALL IN ONE SERVO DRIVER**

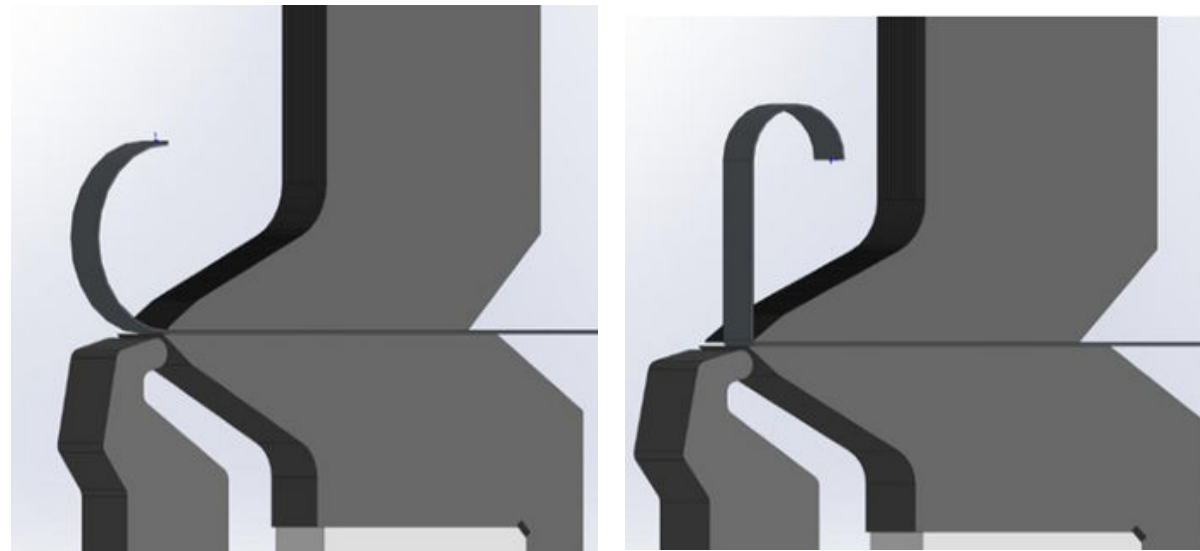
## CONTROLLING SYSTEM

SYNTEC System Functions and Features

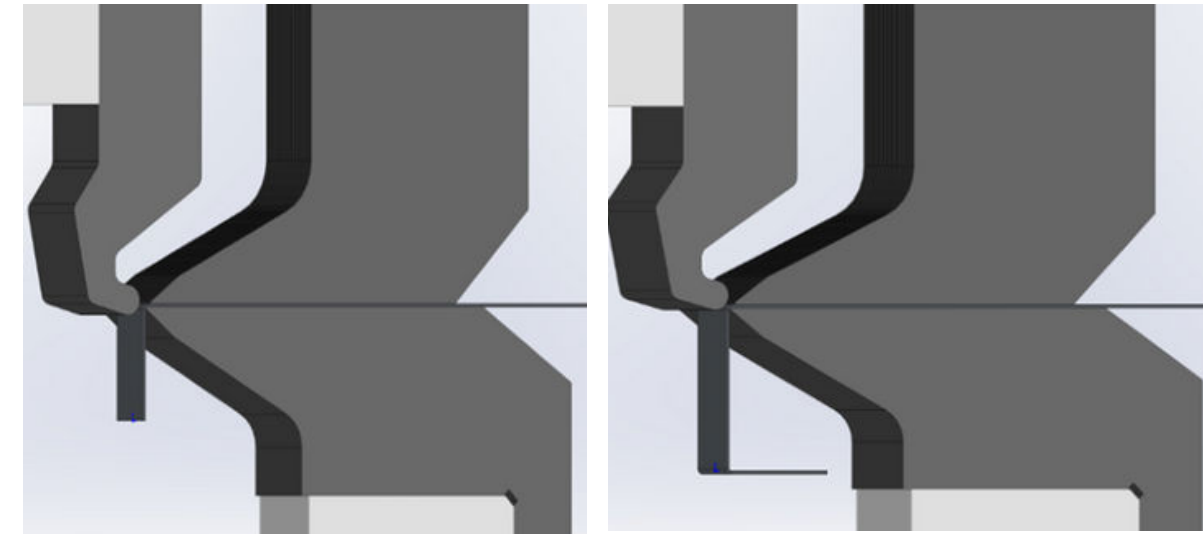
1. 16-axis linkage, BUS CNC controller
  2. Industrial controller, stable quality, in line with various standards
  3. Bus absolute servo motor
  4. Good openness and high adaptability
- The Software Features:**
5. Order-style graphic programming, easy to use
  6. Real-time display of programming bending results, what you see is what you get
  7. The processing speed is fast, and the distance of retraction and rotation is automatically matched for workpieces of different sizes
  8. Support a variety of processes, complex angles/hemming/arcs/special actions and other complex actions can be formed in one step
  9. Support various process parameters and automatic matching compensation module
  10. Support torque limit function, protect the life of the machine while ensuring the compression of the workpiece
  11. Support handwheel simulation function to ensure that there will be no interference and collision during the debugging process
  12. **Support 3D graphics import function in step format, start processing after direct import**

## TOOLS

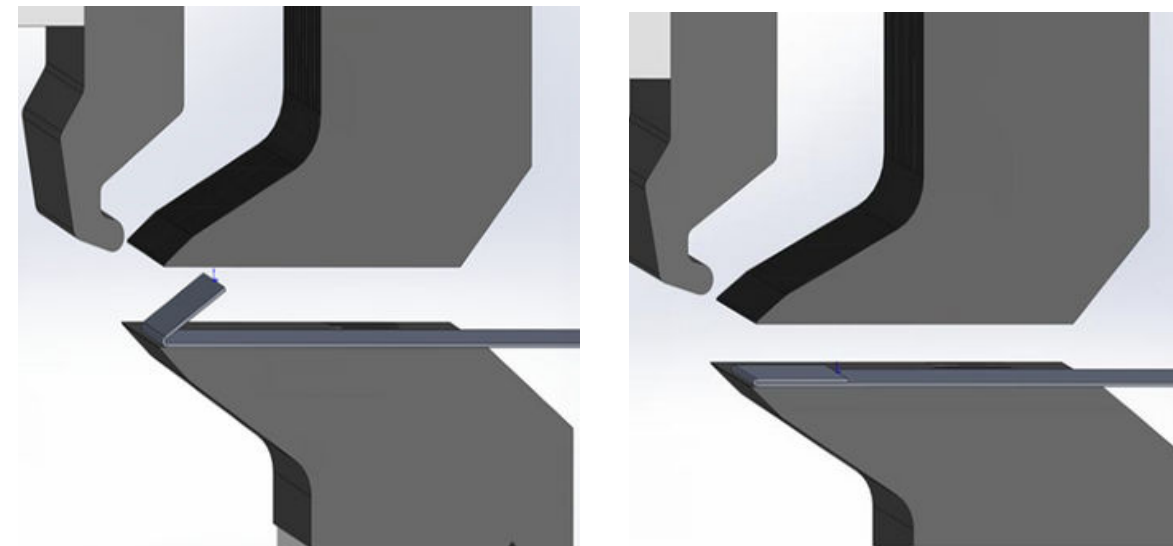
### Bend upward / Bend the arc



### Bend downward



### Crush hemming



The standard bending tool is powerful, which can make both UP and DOWN bending process, without rotate the sheet.

It can also make HEM bending and big ARC bending automatically.

# PBE-1400 CNC PANEL BENDER

## Working Conditions

Power Source: 380V±5%、50Hz, 30KVA

Environment : Clean & Less dust

Max. Temp. : 40 °C

Min. Temp. : -5 °C

Relative Humidity : 55~85%

Altitude : 1000m

## Accessories List

| No | Name          | Qty | Unit  | Remark |
|----|---------------|-----|-------|--------|
| 1  | Feet Pedal    | 1   | Piece |        |
| 2  | Support Screw | 1   | Set   |        |
| 3  | Flat Pad      | 1   | Set   |        |
| 4  | Spring Pad    | 2   | Set   |        |
| 5  | Allen Key     | 1   | Set   |        |
| 6  | Oil Syringe   | 1   | Piece |        |

## Documents List

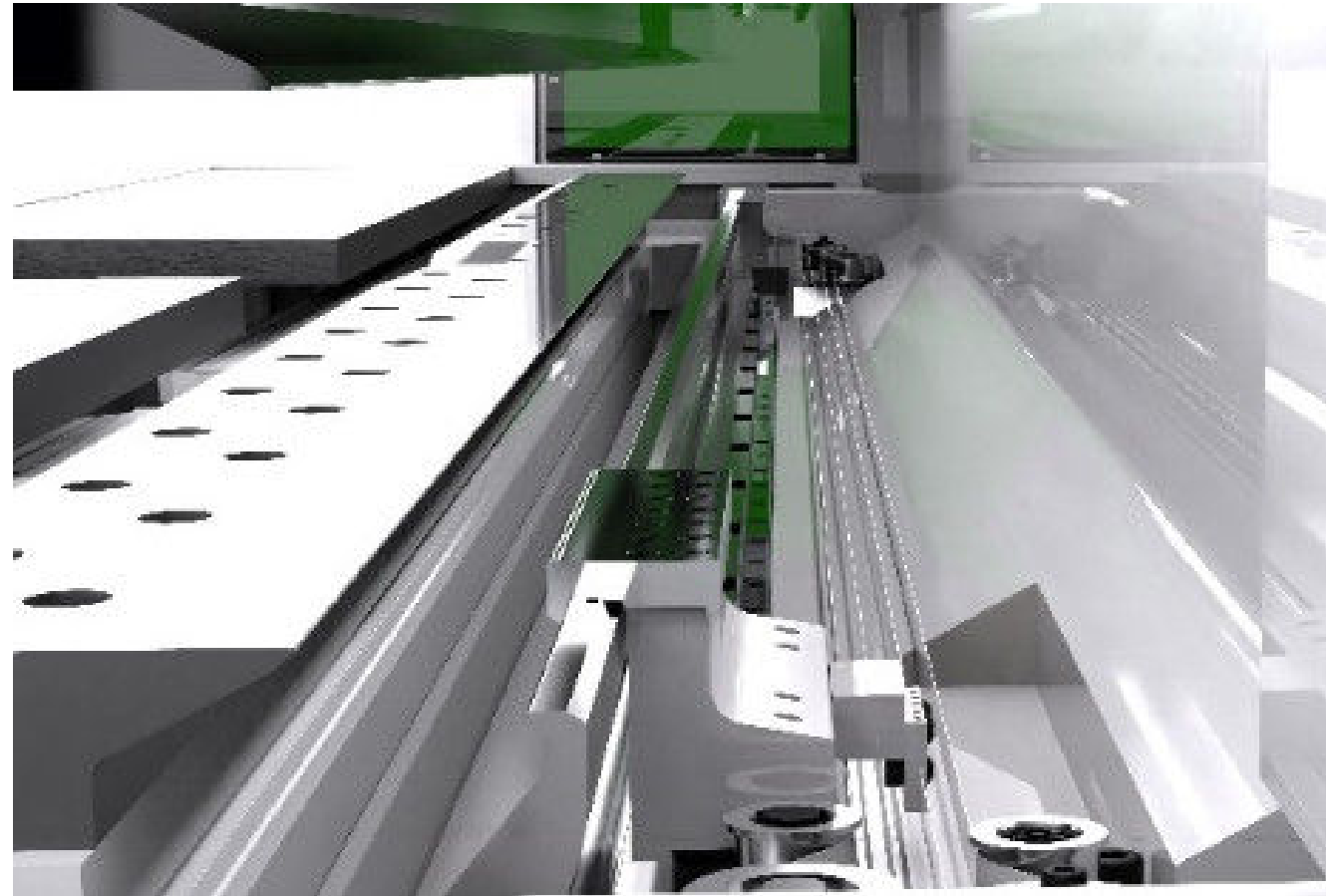
| No | Name                    | Qty |
|----|-------------------------|-----|
| 1  | Operating Manual        | 1   |
| 2  | Controller Manual       | 1   |
| 3  | Electric Diagram        | 1   |
| 4  | Foundation              | 1   |
| 5  | Certificate of Approval | 1   |
| 6  | Packing List            | 1   |

The above documents are bound in the same file.

# PBE-1400 CNC PANEL BENDER

**ANTISHICNE**

## Auxiliary Short Blade (ASB) (Option)



Sometimes, for special production needs, such as panels with complex bending process, it is necessary to use special tools such as ASB.

ASB's design is aimed at the situation that the bending line is not in a straight line conditions, such as broken bending line or need to wrap bending.

This feature can only be used when ASB tools are installed on machines.

## CASES eg.

