

Machine Offer

# [ CNC PANEL BENDER EDGE FOLDING MACHINE ]



Model: PBEH-3000

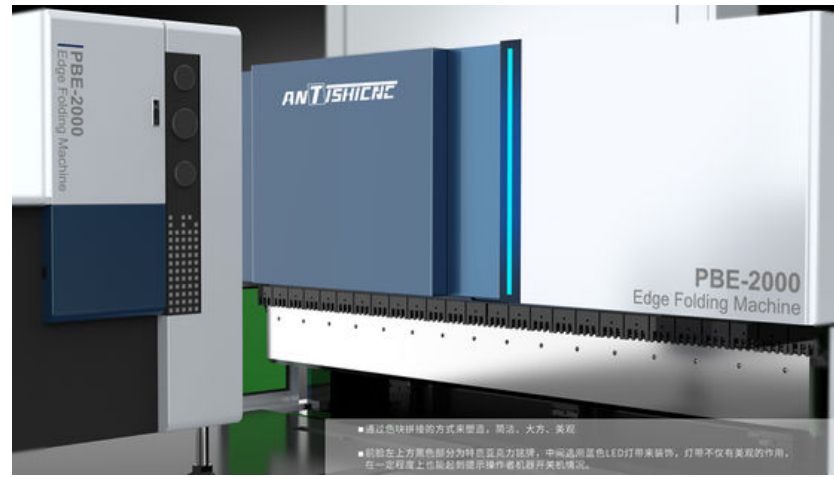
Max. Bending Length: 3000mm

Sheet Feeding Type: C Arm

## PBEH Series

PBEH series are fully automatic heavy-duty CNC bending centers, adopting servo motors as the main power source to precisely control the output; the machine body is welded with steel plate and then tempered as a whole, clamped at once, and precision machined by imported numerical control equipments to ensure the rigidity of the machine body and the machining accuracy; it is equipped with a new generation of high-end numerical control system; it is highly efficient and energy-saving.

The machine body is welded and tempered as a whole with steel plate, and precision processing by imported CNC equipment ensures the rigidity of the machine body and processing accuracy.



Inside

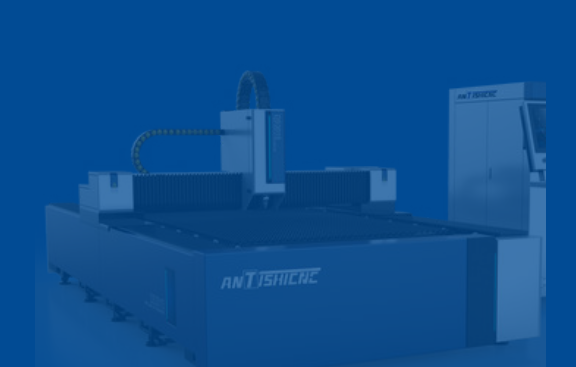


# CNC PANEL BENDER PBEH-3000

**ANTISHICNE**

3000mm bending width

Name	Unit	PBEH-3000	
Max. Bending Length	mm	3000	
Max. Sheet Width	mm	1250	
Max. Bending Height	mm	170	
Min. Workpiece Size (four sides bending)	mm	200	
Min. Workpiece Size (single side bending)	mm	170	
Bending Angle	°	±180	
Max. Pressing Force (Heavy duty)	T	155(3 AXES)	
Min. Sheet Thickness	mm	0.35	
Power(Heavy duty)	KW	100	
Max. Sheet Thickness	SS	mm	1.5
	MS	mm	2.0
	AL	mm	3.0
Dimensions (L×W×H)	mm	3100x5700x2700	
Working Voltage	V	380V±10%	



# CNC PANEL BENDER PBEH-3000



3000mm bending width Heavy Duty Type

## Main Components Configuration

No	Item	Description	Brand
1	Controlling System	HC15E-S Touch Screen	SYNTEC
2	Servo Driver	BUS Control	SYNTEC
3	Servo Motor	H & F Series	SYNTEC
4	Motor Reducer		SIGRINER
5	Ball Screw	Heavy Load	YIGONG
6	Bearing		NACHI
7	Linear Guide		HIWIN/PMI
8	Coupling		MIKIPULLEY
9	Lubrication System		BAOTN
10	Electric Component		Schneider
11	Pneumatic Component		AirTac/JULY

## Configuration

Name	Configuration
Feeding Type	Arm Hold Dual Rotate
Table Type	Brush
CNC Axes	11
Speed Adjustment	Standard
Senior Command	Standard
Arc Command	Standard
HEM Command	Standard
Robot Connection	Standard



# PBEH-3000 CNC PANEL BENDER



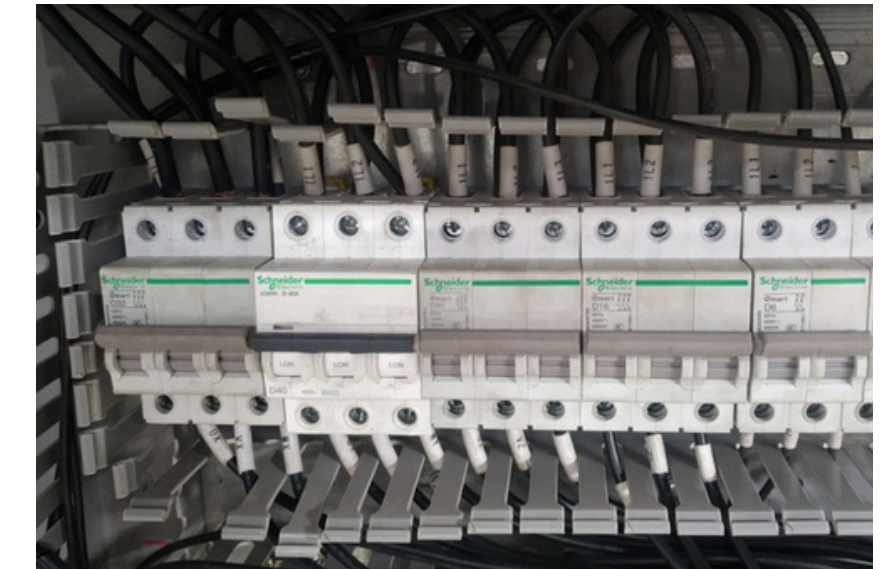
## FRAME

Because of the high-strength motion requirements of the bending center, the frame adopts an arch design, thickened, thickened and widened, the frame is tempered, heat-treated, annealed and tempered, and aged twice to ensure the long-term running accuracy, stability and high rigidity of the machine.



## CONTROLLER

Adopt all electric servo full-closed loop system, the system supports up to 16-axis simultaneous linkage, so that the bending action is smooth, the mechanical operation is highly coordinated, it can smoothly realize the combination of various complex actions, and with high working efficiency.



## ELECTRICAL

The main components of the electrical control system of the machine are adapted Schneider products from France, and the main seals of the hydraulic system are imported from Europe and the United States.

# PBE-1400 CNC PANEL BENDER

**ANTISHINE**

## SERVO SYSTEM

The pure electric servo fully closed-loop system is adopted, and the system supports up to 16 axes concurrent linkage, so that the bending action is smooth, the mechanical operation is highly coordinated, and the combination of various complex actions can be smoothly realized. The whole machine has high working efficiency and low daily maintenance workload. It has a self-lubricating system for the whole machine. When the oil amount is lower than the specified value, the system will automatically alarm. Just follow the program prompts to add lubricating grease.



**IO Config.**



**BENDING CONTROLLER**



**ALL IN ONE SERVO DRIVER**

## CONTROLLING SYSTEM

SYNTEC System Functions and Features

1. 16-axis linkage, BUS CNC controller
2. Industrial controller, stable quality, in line with various standards
3. Bus absolute servo motor
4. Good openness and high adaptability

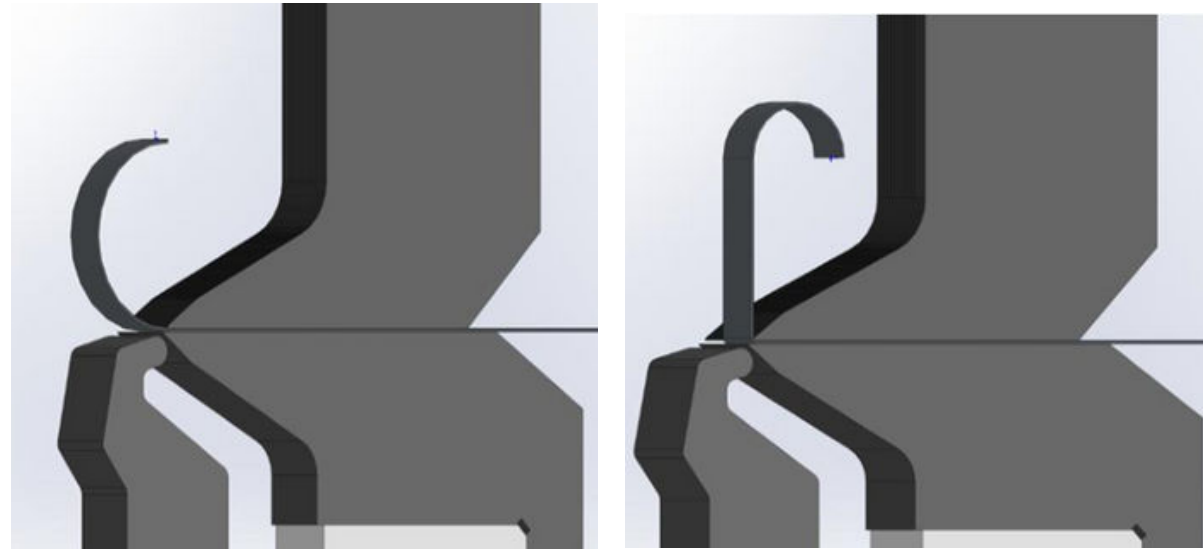
### The Software Features:

5. Order-style graphic programming, easy to use
6. Real-time display of programming bending results, what you see is what you get
7. The processing speed is fast, and the distance of retraction and rotation is automatically matched for workpieces of different sizes
8. Support a variety of processes, complex angles/hemming/arcs/special actions and other complex actions can be formed in one step
9. Support various process parameters and automatic matching compensation module
10. Support torque limit function, protect the life of the machine while ensuring the compression of the workpiece
11. Support handwheel simulation function to ensure that there will be no interference and collision during the debugging process

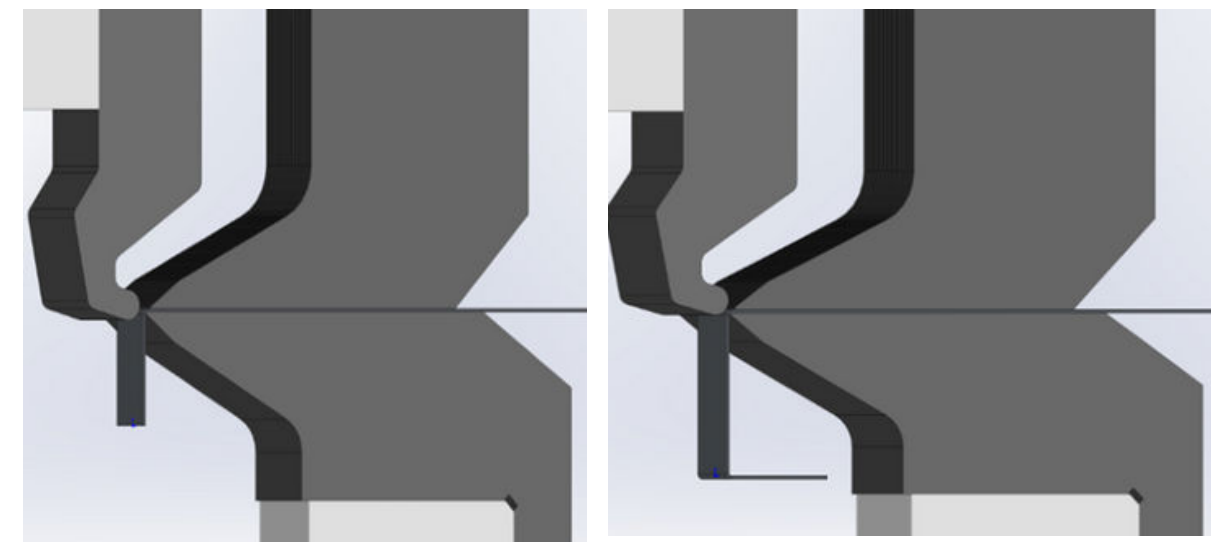
**12. Support 3D graphics import function in step format, start processing after direct import**

# TOOLS

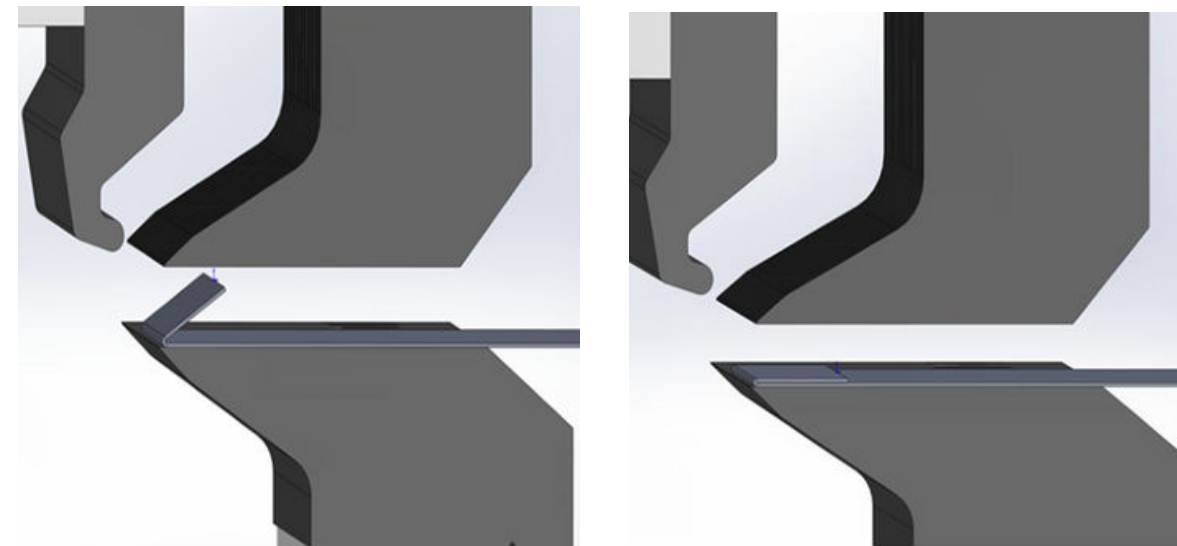
## Bend upward / Bend the arc



## Bend downward



## Crush hemming



The standard bending tool is powerful, which can make both UP and DOWN bending process, without rotate the sheet.

It can also make HEM bending and big ARC bending automatically.

# PBE-1400 CNC PANEL BENDER



## Working Conditions

Power Source: 380V±5%、50Hz, 30KVA

Environment : Clean & Less dust

Max. Temp. : 40 °C

Min. Temp. : -5 °C

Relative Humidity : 55~85%

Altitude : 1000m

## Accessories List

No	Name	Qty	Unit	Remark
1	Feet Pedal	1	Piece	
2	Support Screw	1	Set	
3	Flat Pad	1	Set	
4	Spring Pad	2	Set	
5	Allen Key	1	Set	
6	Oil Syringe	1	Piece	

## Documents List

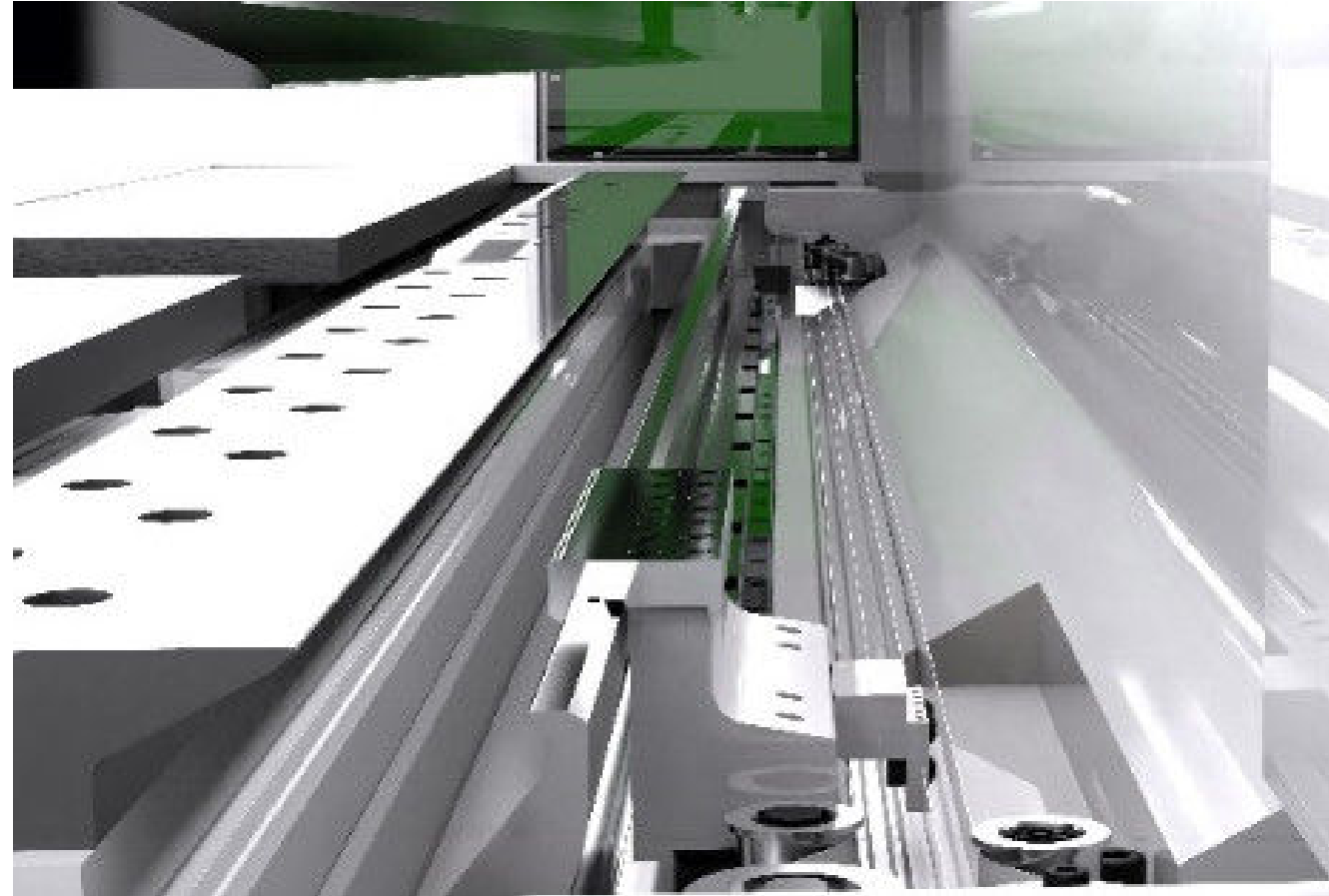
No	Name	Qty
1	Operating Manual	1
2	Controller Manual	1
3	Electric Diagram	1
4	Foundation	1
5	Certificate of Approval	1
6	Packing List	1

The above documents are bound in the same file.



# PBE-1400 CNC PANEL BENDER

## Auxiliary Short Blade (ASB) (Option)



Sometimes, for special production needs, such as panels with complex bending process, it is necessary to use special tools such as ASB.

ASB's design is aimed at the situation that the bending line is not in a straight line conditions, such as broken bending line or need to wrap bending.

This feature can only be used when ASB tools are installed on machines.

## CASES eg.

