

Slant Bed CNC lathe

Model: TCK50A



Supplier: Shanghai ANTS Machine Equipment Co.,Ltd

Contents

Item	Contents Description
1	Technical Parameter
2	Product Reference Picture
3	Equipment Introductions
4	Standard Equipment&Optional Equipment
5	Manufacturing Time
6	Acceptance Test & Accuracy standard
7	Quality Assurance & After-sales Service
8	Packing & Shipping Terms
9	Company Introduction
10	Quotation & Transaction Terms.

Technical proposal

Part 1: Technical parameter

Specifications		Units	TCK50A/500	TCK50A/800
Max. Swing over bed		mm	560	560
Swing over cross slide		mm	260	260
Distance between center		mm	500	800
Max. disc machining diameter			400	440
Max. turning length		mm	500	800
Spindle end type			A2-6	A2-8
Spindle through hole diameter		mm	Φ66	Φ86
Bar diameter		mm	Φ55	Φ75
Hydraulic chuck		mm	10 inch	10 inch
Hydraulic chuck pull rod through hole		mm	55	75
Rail form			Linear Guides	Linear Guides
Spindle taper taper		No	Metric 70 1: 20	Metric 92 1: 20
Spindle limit speed		rpm	3000rpm	3000rpm
Tail-stock sleeve diameter		mm	70	90
Tail-stock sleeve inner hole taper		No	Mohs 5#	Mohs 5#
Tail-stock sleeve stroke		mm	80	80
Tail stock form			Hydraulic	Hydraulic
Tool post/Turret		Position	8	8
Knife square size		mm	25×25	25×25
Screw model	X-Direction		3210	3210
	Z-Direction		4010	4010
Rail model	X-Direction		RGH35CA2R680	RGH35CA2R725
	Z-Direction		RGH35CA2R1120	RGH35CA2R1515
X/Z motor torque		N.M	7.5/10	10/10
X/Z rapid traverse speed		m/min	18/18	18/18
X travel		mm	240	260
Z travel		mm	540	860
Mini. setting unit		mm	0.0001	0.0001
Main motor power		KW	11	15
Machine net weight		Kg	3000	4000
Dimensions (L×W×H)		mm	2700*2000*2000	3300*2000*2000

Part 2 : Product reference picture



Part 3: Equipment Introductions

Product description

The TCK Series High Precision CNC Turning Center Slant Bed product is a semi-closed slant-bed turning and milling machine with X, Y, Z and C axes servo control. The structure and external dimensions are compact and reasonable. The spindle (C axis) is driven by a servo motor. It can realize the turning of the outer circle, the end surface and the thread of various materials, such as shafts and discs, and various surface milling and drilling in radial and axial directions, and is suitable for efficient machining of small parts.

Features

- 1.The inclined guide rail is mainly used to overcome gravity and have better stability to improve the precision of the machine tool
- 2.The inclined machine tool can effectively utilize the space and greatly reduce the plane occupied by the machine tool.
- 3.The inclined guide rail also facilitates the concentration of iron chips on the chip conveyor for automatic chip removal.

Part 4: Standard Equipment&Optional Equipment

Standard Equipment

Name		Specifications	Quantity	Supplier
CNC System		Siemens 808D	1set	Siemens
Spindle motor		22 KW	1set	CTB
Spindle unit		200-282/5-3V	1set	China
Spindle bearing		NN3020K+MTM100/ NN3018K	1 set each	China
Guide	X -Direction	RGH35CA2R680/725	1 set	HIWIN/PMI
	Z-Direction	RGH35CA2R1040/1120/1515	1 set each	HIWIN/PMI
Ball screw	X-Direction	3210/703	1set	HIWIN/PMI

	Z-Direction	4010/965/1052/1429	1 set each	HIWIN/PMI
	Screw bearing	25TAC62/30TAC62	2 set each	NSK
	Tool post/Turret	TX-200-8T/TCS-100-8T	1set	China
	Automatic lubricating device	RBCLB-3ZK	1set	China
	Cooling pump	180W	1set	China
	Hydraulic station	1.5kw	1set	China
	Hydraulic chuck	KT0-3/A2-6; KT0-3/A2-8	1set	China
	Chip conveyor	Chain plate type (optional)	1set	China

Optional accessories

Name	Specifications	Quantity
Control System	GSK	1 set
Chip conveyor	Chain plate type	1 set

Part 5 :Manufacturing Time

Around 45-60 days , the machine will be ready for FAT(Factory Acceptance Test) after received deposit and after confirmed contract and technical proposal.

Remark: If the customer has special requirements for the delivery time, please confirm with Shanghai ANTS machine

Part 6 : Acceptance Test

Test items	Standard tolerance (mm)
Periodic axial play of the main shaft	0.005
Radial run-out of spindle chuck positioning cone	0.005
Position accuracy	Repeat positioning accuracy A
	±0.005
Diameter uniformity	0.01/150
Flatness	0.025/φ300
Thread pitch product error	0.010/100
Surface roughness	Ra1.6μm

Part 7 : Quality Assurance & After-sales Service

Shanghai ANTS Machine Equipment Co., Ltd. fully fulfills the terms of machine tool technical services promised to users.

1. Since the final acceptance of the machine tool, all failures caused by quality problems will be guaranteed for one year free of charge.
2. Since the final acceptance of the machine tool, the failure of other parts caused by quality problems will be guaranteed for one year free of charge.
3. Since the final acceptance of the machine tool, we also guarantee to actively cooperate with the user to repair the failure caused by the quality of the machine tool, and free labor costs within one year.
4. Lifetime guarantee to provide spare parts supply at preferential prices.

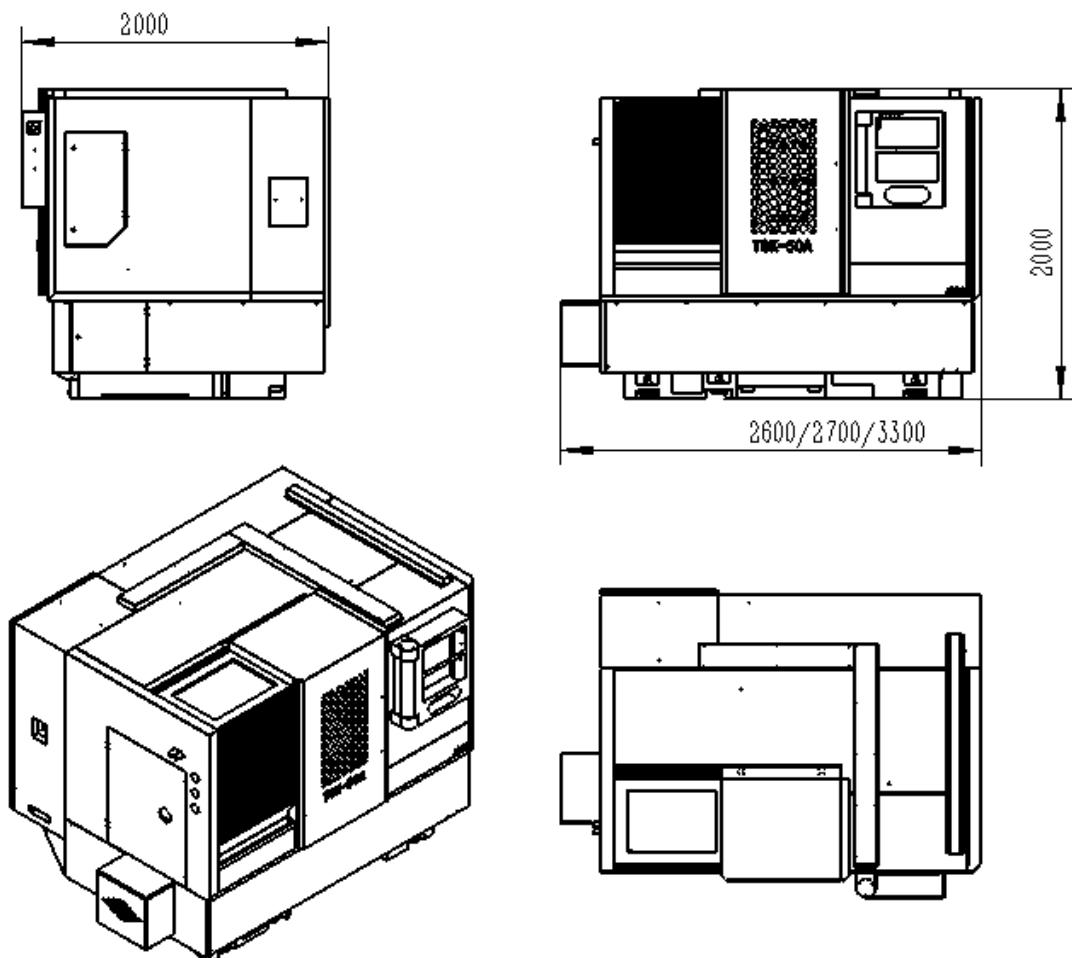
Warranty service:

one year warranty(12 months since customer receive & use the machine).

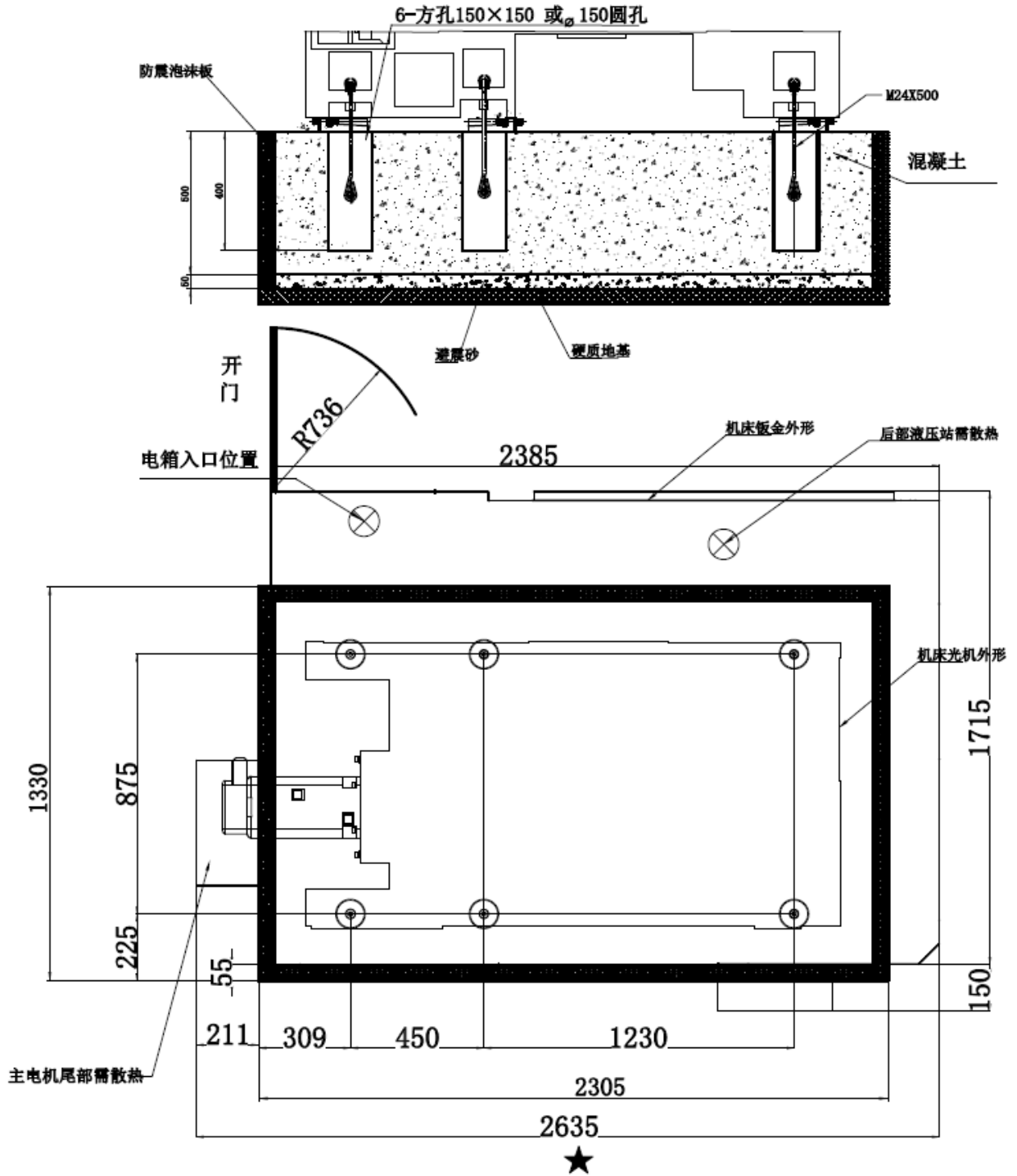
The manufacturer guarantees to provide life-long paid maintenance services for the product.

Part 8: Packing & Shipping Terms

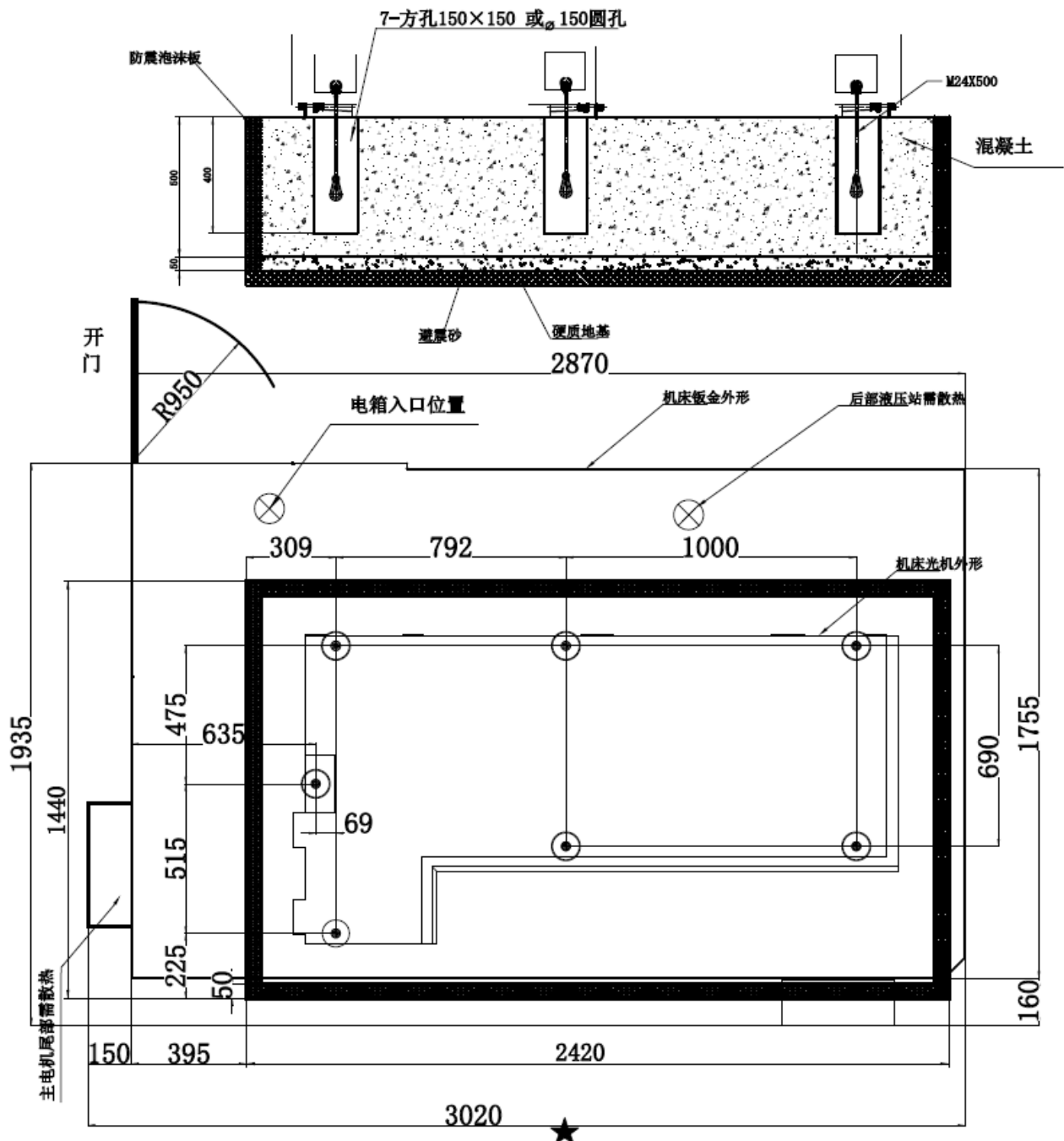
1. Machine Dimensions&Foundation Drawing



TCK50AX500



TCK50AX800



2. Provide the following technical documents when the equipment is delivered

Packing List 1 copy

Certificate of conformity (including precision inspection sheet) 1 copy

User's manual 1 copy

CNC system manual 1 copy

Electric knife holder manual 1 copy

Inverter manual 1 copy

Motor manual 1 copy

Driver Manual 1 copy

Oil pump manual 1 copy

3. Packaging and transportation

Exporting standard wood box packing

The transportation is carried out in accordance with the contract terms.

Part 9: Company Introduction

Shanghai ANTS Machine Company is mainly engaged in Universal lathe, CNC lathe, Heavy duty lathe, Special purpose lathe, Sawing machine, Drilling machine, Milling Machine, VMC(Vertical Machining Centre), HLC(Horizontal Machining Centre), Gantry Machining Centre and other equipment. The products are sold to Hebei, Shaanxi, Hunan, Henan, Jiangsu, Shandong, Guangdong, Shanghai and other places. More than 300 professional after-sales service personnel in 83 offices across the country provide customers with pr-sales and after-sales services at any time. The products are deeply trusted by customers and are exported to more than 20 countries and regions such as the United States, Germany, Italy, India, Thailand, and Russia. Especially in recent years, they have been widely used in major domestic well-known enterprises such as China National Heavy Duty Truck, Ministry of Aeronautics and Space, Zhongyuan Special Steel, Zhengmei Machinery, Shanghai Heavy Industry, Wuhan Iron and Steel, Anshan Iron and Steel and Sany Heavy Industry have the characteristics of rich experience, excellent.

Factory Pictures



ISO 14001 Environment Management System

ISO 9001 Quality Management System

European CE Certificate



Part 10: Quotation & Transaction Terms.**QUOTATION SHEET**

CURRENCY UNIT : RMB

Date: June 15th, 2023

Machine Type	Equipment Model	Technical Parameter	PRICE in RMB (EXW Shanghai)
Slant Bed CNC lathe	TCK50A*800	Fanuc CNC system 12-station power turret Conveyor for chip removal Counter spindle	361800 RMB/set

* The sea freight cost fluctuate everyday due to the global shipping situation, The final confirmed price can be checked when the machine is about to ship.

Optional:

Name	Price in RMB
Parts catcher	7150 RMB/set

Remarks :

1. **Origin:** The People's Republic of China
2. **Delivery Time:** 45-60 Days ready for the factory acceptance test.
3. **Payment terms:** 30% payment in advance for deposit, 70% balance after the pre-acceptance test before shipment
4. **Package:** Factory ordinary packaging, please confirm with the ANTISHI for more details
5. **Validity:** 30 Days. (The buyer has to re-check with seller if the quotation validity is expired)