

# Slant Bed CNC lathe

Model: TCK50A\*800



**Supplier: Shanghai ANTS Machine Equipment Co.,Ltd**

## Contents

Item	Contents Description
1	Technical Parameter
2	Product Reference Picture
3	Equipment Introductions
4	Standard Equipment&Optional Equipment
5	Manufacturing Time
6	Acceptance Test & Accuracy standard
7	Quality Assurance & After-sales Service
8	Packing & Shipping Terms
9	Company Introduction
10	Quotation & Transaction Terms.

## Technical proposal

### Part 1: Technical parameter

Specifications	Units	TCK50Ax800
Max. Swing over bed	mm	Φ560
Swing over cross slide	mm	Φ260
Distance between center	mm	800
Max. disc machining diameter	mm	Φ440
hydraulic chuck	Inch	10 inch
X-axis maximum travel	mm	260
Z-axis maximum travel	mm	900
Spindle maximum speed	rpm	2500 rpm
Spindle speed change		Infinitely variable speed
Spindle end code		A2-8
Spindle through hole	mm	Φ 86
Draw tube through hole	mm	Φ 75
Rapid traverse speed	m/min	X:18 Z:18
cutting feed rate	mm/min	1-15000
X/Z direction motor torque	NM	10/10 (X direction with brake)
Spindle motor power	KW	15
Tool post/Turret		8
Knife square size	mm	25*25
Maximum boring tool diameter	mm	40
Sleeve diameter	mm	90
Sleeve stroke	mm	80
Tailstock sleeve tapered hole		Mohs 5#
Maximum travel of tailstock	mm	750
Total power capacity	KVA	18
Cutting water tank capacity	L	90
Overall dimensions (length × width × height)	mm	3300*2000*2000
Total Weight	KG	4500

## Part 2 : Product reference picture



## Part 3: Equipment Introductions

### Product description

The TCK Series High Precision CNC Turning Center Slant Bed product is a semi-closed slant-bed turning and milling machine with X, Y, Z and C axes servo control. The structure and external dimensions are compact and reasonable. **The spindle (C axis) is driven by a servo motor.** It can realize the turning of the outer circle, the end surface and the thread of various materials, such as shafts and discs, and various surface milling and drilling in radial and axial directions, and is suitable for efficient machining of small parts.

### Features

- 1.The inclined guide rail is mainly used to overcome gravity and have better stability to improve the precision of the machine tool
- 2.The inclined machine tool can effectively utilize the space and greatly reduce the plane occupied by the machine tool.
- 3.The inclined guide rail also facilitates the concentration of iron chips on the chip conveyor for automatic chip removal.

## Part 4: Standard Equipment&Optional Equipment

### Standard Equipment

Name	Specifications	Quantity	Supplier
Control System	GSK988T	1set	GSK
Spindle unit	Φ230	1set	Domestic
Screw bearing	30TAC62	1set	nsk
Servo turret	8-station	1set	Domestic
Spindle motors and drives	Servo main motor (15 KW)	1set	GSK

X/Z roller guide	45/45	1set	HIWIN/PMI
X/Z ball screw	3210/4010	1set	HIWIN/PMI
Automatic lubrication		1set	Domestic
hydraulic station	2.2kw	1set	Domestic
Hydraulic chuck cylinder	10 inch	1set	Domestic
cooling pump	370W	1set	Domestic
Hydraulic tail top		1set	Domestic

### Optional accessories

Name	Specifications	Quantity
Control System	Siemens/Fanuc	1 set
Chip conveyor	Chain plate type	1 set

### Part 5 :Manufacturing Time

Around 45-60 days , the machine will be ready for FAT(Factory Acceptance Test) after received deposit and after confirmed contract and technical proposal.

Remark: If the customer has special requirements for the delivery time, please confirm with Shanghai ANTS machine

### Part 6 : Acceptance Test

Test items		Standard tolerance (mm)
Periodic axial play of the main shaft		0.005
Radial run-out of spindle chuck positioning cone		0.005
Position accuracy	Repeat positioning accuracy A	±0.005
Diameter uniformity		0.01/150
Flatness		0.025/φ300
Thread pitch product error		0.010/100
Surface roughness		Ra1.6μm

### Part 7 : Quality Assurance & After-sales Service

Shanghai ANTS Machine Equipment Co., Ltd. fully fulfills the terms of machine tool technical services promised to users.

1. Since the final acceptance of the machine tool, all failures caused by quality problems will be guaranteed for one year free of charge.
2. Since the final acceptance of the machine tool, the failure of other parts caused by quality problems will be guaranteed for one year free of charge.
3. Since the final acceptance of the machine tool, we also guarantee to actively cooperate with the user to repair the failure caused by the quality of the machine tool, and free labor costs within one year.
4. Lifetime guarantee to provide spare parts supply at preferential prices.

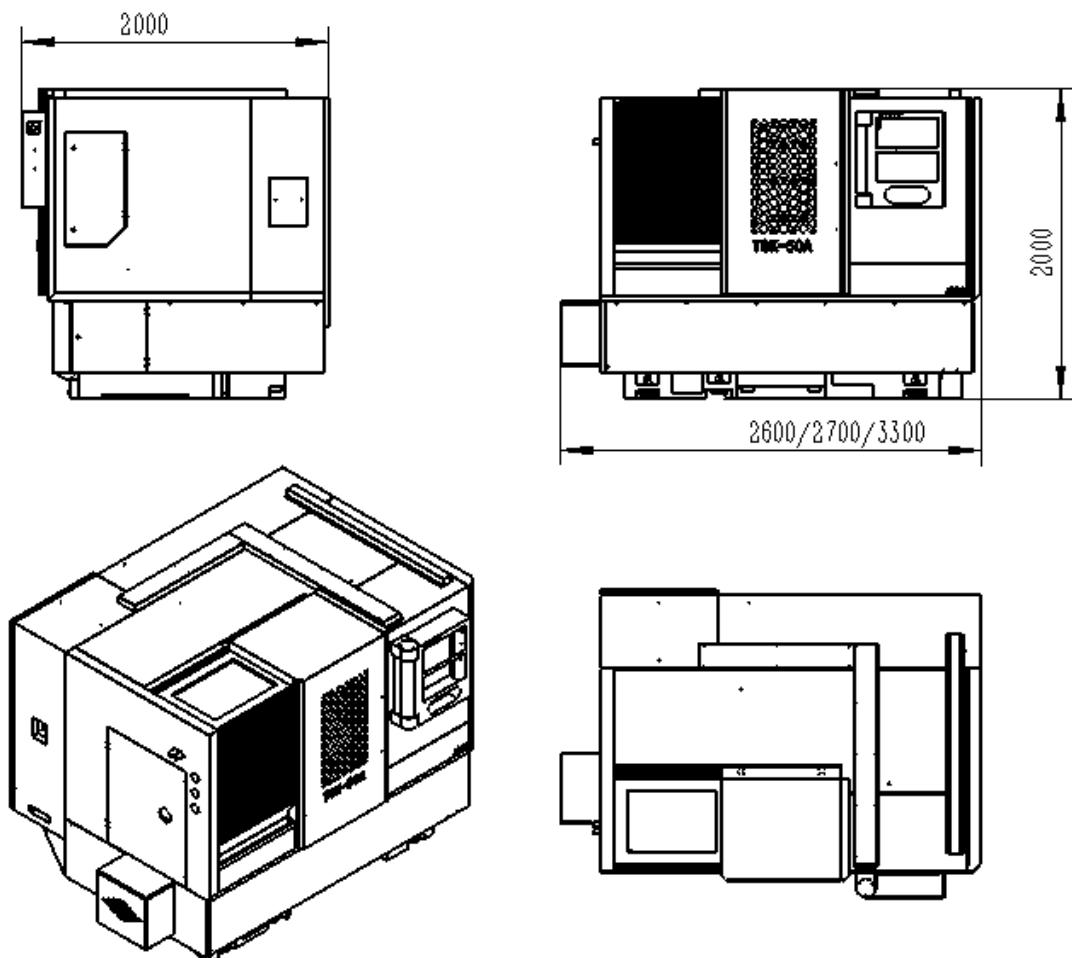
### Warranty service:

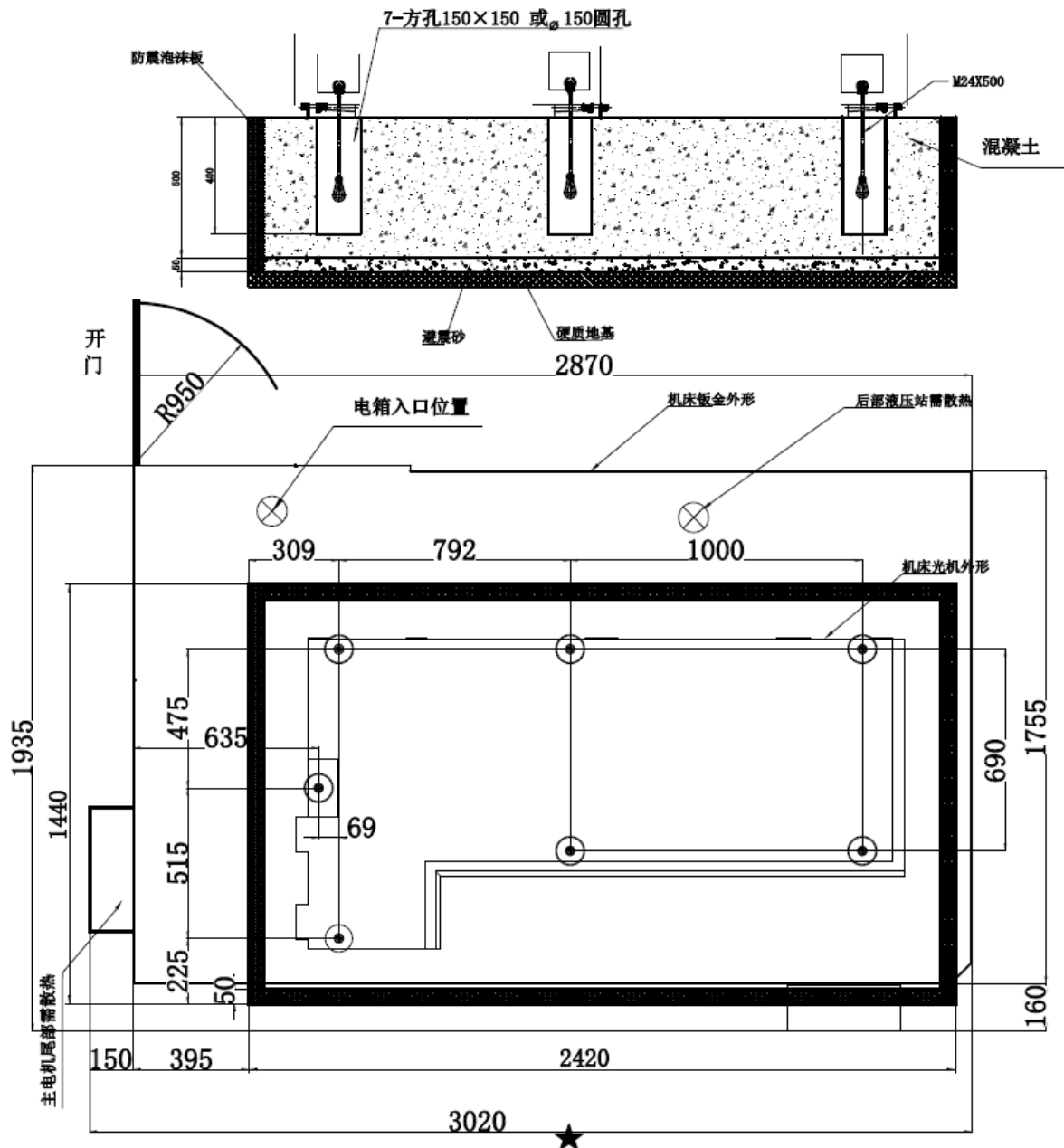
one year warranty( 12 months since customer receive & use the machine).

The manufacturer guarantees to provide life-long paid maintenance services for the product.

## Part 8: Packing & Shipping Terms

### 1. Machine Dimensions&Foundation Drawing





**2. Provide the following technical documents when the equipment is delivered**

Packing List 1 copy

Certificate of conformity (including precision inspection sheet) 1 copy

User's manual 1 copy

CNC system manual 1 copy

Electric knife holder manual 1 copy

Inverter manual 1 copy

Motor manual 1 copy

Driver Manual 1 copy

Oil pump manual 1 copy

### 3. Packaging and transportation

Exporting standard wood box packing

The transportation is carried out in accordance with the contract terms.

### Part 9: Company Introduction

Shanghai ANTS Machine Company is mainly engaged in Universal lathe, CNC lathe, Heavy duty lathe, Special purpose lathe, Sawing machine, Drilling machine, Milling Machine, VMC(Vertical Machining Centre), HLC(Horizontal Machining Centre), Gantry Machining Centre and other equipment. The products are sold to Hebei, Shaanxi, Hunan, Henan, Jiangsu, Shandong, Guangdong, Shanghai and other places. More than 300 professional after-sales service personnel in 83 offices across the country provide customers with pr-sales and after-sales services at any time. The products are deeply trusted by customers and are exported to more than 20 countries and regions such as the United States, Germany, Italy, India, Thailand, and Russia. Especially in recent years, they have been widely used in major domestic well-known enterprises such as China National Heavy Duty Truck, Ministry of Aeronautics and Space, Zhongyuan Special Steel, Zhengmei Machinery, Shanghai Heavy Industry, Wuhan Iron and Steel, Anshan Iron and Steel and Sany Heavy Industry have the characteristics of rich experience, excellent.

#### Factory Pictures





**Part 10: Quotation & Transaction Terms**

## QUOTATION SHEET

CURRENCY UNIT : USD

HS Code : 8458110090

Date: February 2, 2024

Machine Type	Equipment Model	Technical Parameter	PRICE in USD (FOB Shanghai)
Slant Bed CNC lathe	TCK50A*800	GSK988T 8-station turret Chain plate type	33000 USD/set

\* The sea freight cost fluctuate everyday due to the global shipping situation, The final confirmed price can be checked when the machine is about to ship.

**Optional:**

Name	Price in USD
VDI Powered turret (Rotation speed 3000rpm)	8450 USD/set

Siemens system	10000 USD/set
FANUC System	10000 USD/set

**Remarks :**

- 1. Origin:** The People's Republic of China
- 2. Delivery Time:** 45-60 Days ready for the factory acceptance test.
- 3. Payment terms:** 30% payment in advance for deposit,70% balance after the pre-acceptance test before shipment
- 4. Package:** Factory ordinary packaging, please confirm with the ANTISHI for more details
- 5. Validity:** 30 Days.(The buyer has to re-check with seller if the quotation validity is expired)